

ᐃᐱᐱᐱᐱᐱᐱ ᐃᐱᐱᐱᐱᐱᐱ ᐃᐱᐱᐱᐱᐱᐱᐱᐱ

How to Make Mittens



ᐱᐱ ᐱᐱᐱᐱ ᐱᐱᐱᐱ

Joan Kioke Wesley



ᐃᐱᐱᐱᐱᐱ ᐱᐱᐱᐱ

Anastasia Weesk

ᐃᐱᐱᐱ ᐱᐱᐱ ᐃᐱᐱᐱᐱᐱᐱᐱᐱ ᐃᐱᐱᐱᐱᐱᐱᐱᐱ

Ojibway and Cree Cultural Centre

How to Make Mittens

© 2006 Ojibway and Cree Cultural Centre
150 Brousseau Avenue, Unit B
Timmins, Ontario
P4N 5Y4

phone: (705) 267-7911
fax: (705) 267-4988
email: info@occc.ca
website: www.occc.ca

Written by Anastasia Weesk
Photographs by Jim Hollander
Funded by Heritage Canada through the Aboriginal Language Initiative



ISBN 0-919523-84-6

ԾԼ ԼԻԳԵԼՆՊ Ք ԾՏԸԾԾԾՎՊ Վ ՔՐՔԻԾԸՐ
 Ք ՔՆԿՎԴԴԾԾ
 ՋՊ ՔԾԿԳ ՎՎԾԾԾԾ
 ԴԾԳՎ Վ Ք ՔՐՔԾԾԾԾԾԾԾԾՎՐ Ե ԾՏ
 ՔՐԳԾԸԼՊ
 Վ ՋԻԾԾԾԾ ՎՐՈՐԵԾԾԾԾՎՐ



This

book is

dedicated to our Elder
Joan Kioke Wesley.

Thank you for sharing your knowledge of
mitten making with us.

ᐅᐅ ᐅᐅᐅᐅ ᐅᐅᐅ ᐅᐅ ᐅᐅᐅᐅᐅᐅ ᐅ
ᐅᐅᐅᐅᐅ ᐅᐅᐅᐅᐅᐅ ᐅᐅᐅᐅᐅᐅᐅᐅ



Joan Kioke Wesley busy working with the participants of the mitten making workshop.

◀<ᠢᠴᠤᠳᠤ:

ᠵᠢᠠᠳᠤ – 60 ᠒ᠢᠰᠢ ᠒ᠤ 20 ᠒ᠢᠰᠢ ᠨ
ᠳᠢᠠᠴᠤᠳᠤᠰᠢᠵᠢ, ᠳᠳᠤ ᠠᠳᠤ – 60 ᠒ᠢᠰᠢ ᠒ᠤ 20
᠒ᠢᠰᠢ ᠨ ᠳᠢᠠᠴᠤᠳᠤᠰᠢ, ᠠᠨᠢᠵᠢ,
ᠪ ᠤᠪᠠᠨᠠᠵᠢᠵᠢ ᠴᠠᠨᠢᠪᠢ, ᠠᠳᠤᠵᠢᠵᠢᠳ ᠠᠳᠤ
ᠠᠨᠢᠪᠢᠳᠢ – ᠰᠢ 24 ᠒ᠢᠰᠢ ᠨ ᠳᠢᠠᠨ ᠢᠠᠨ
ᠨᠳ ᠤᠪ ᠰᠢ ᠒ᠢᠰᠢ ᠨᠳᠢᠠᠴᠤᠳᠤᠰᠢ, ᠴᠢᠨᠠᠨᠢᠪᠢ
ᠰᠤᠵᠤ ᠨ ᠳᠢᠠᠨᠢ, ᠢᠪᠢᠨᠢ ᠴᠢᠨᠢᠪᠢ,
ᠪᠴᠠᠨᠢᠪᠢᠳᠢ, ᠤᠨᠢᠪᠢ, ᠨᠠᠨᠢᠪᠢᠨᠢ ᠢᠴ ᠠᠳ
ᠨᠠᠨᠢᠪᠢᠨᠢᠠᠳ, ᠤᠨᠢᠪᠢᠨᠢ, ᠨ ᠢᠴᠢᠨᠢ ᠢᠴ ᠠᠳ
ᠤᠪᠢᠨᠢᠪᠢ ᠤᠨᠢᠪᠢᠨᠢᠪᠢᠳᠢ



Materials:

moosehide (approximately 60" x 20"), duffle (approximately 60" x 20"), sinew, strong cotton thread, 2 fur trims (2" x 24"), glover needle #5, standard needle, thimble, scissors, ruler or measuring tape, pen or pencil, and thick paper or cardboard

ՃՇՂ•ՃՐ 1:

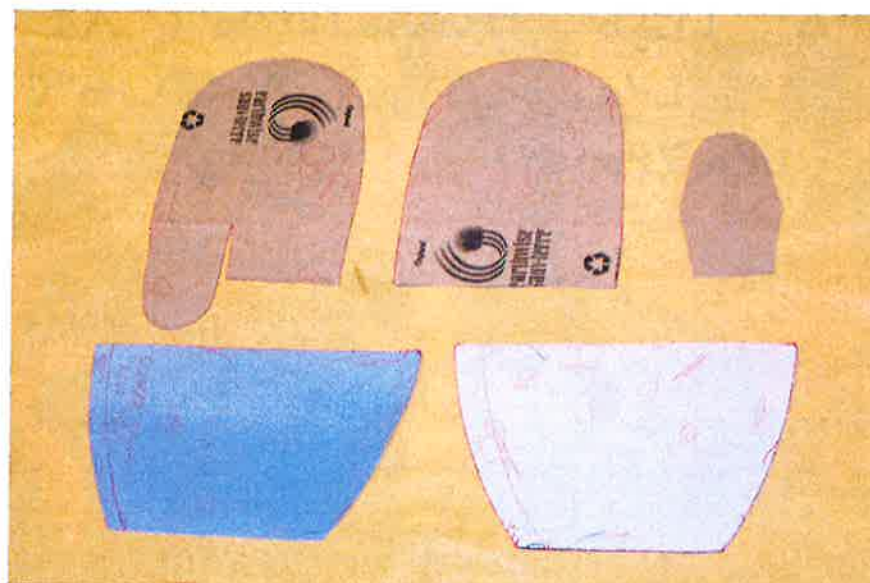
•Վ•Շբբբբ՝ Վ՞ՈԿ՝ Լբբբբբ•Վբ՝x

6 1/2 ԴԴԴ՝ Ծ՞Ը Ըժ 6 3/4 Շ Ճ՞ԸԴ Վբբ՞բ՝

8 1/2 ԴԴԴ՝ Ծ՞Ը Ըժ 8 3/4 Շ Ճ՞ԸԴ Բ•բ՝

ԼԴԿ ԴԴԴ՝ •ՎԿ՞ 2 ԴԴԴ՝ Ճբժ՝

ԴԴԴ՝ •ՎԿ՞ 3 1/2 ԴԴԴ՝ ԲԴ Ճ՞•բ՝



Step 1:

Make patterns for the mittens using thick paper or cardboard with the following dimensions:

width 6 1/2" to 6 3/4"

length 8 1/2 to 8 3/4"

cut down 2" for thumb

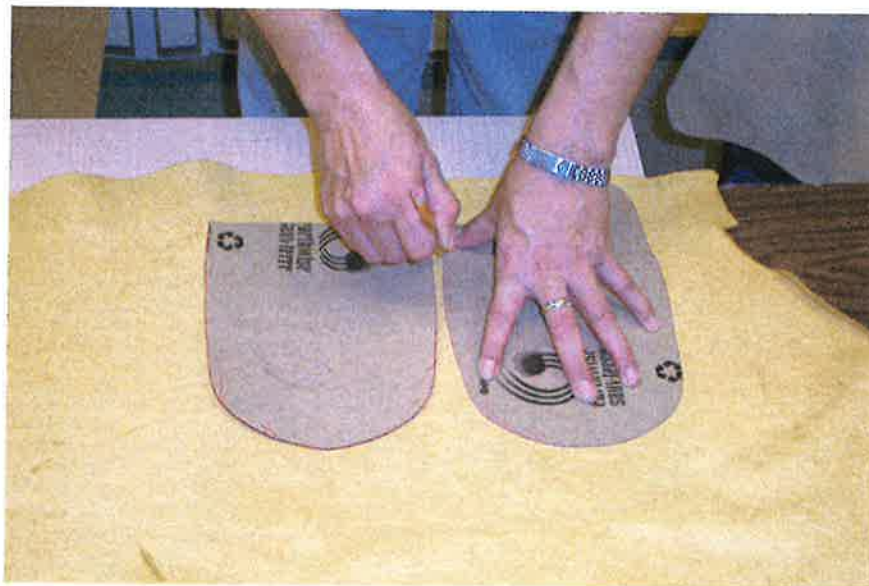
thumb 3 1/2"

ᐃᐅᐅᐅᐅ 2:

ᑭᐅᐅᐅᐅ ᐅᐅ ᐅᐅ ᐅᐅᐅᐅᐅᐅᐅ ᐅᐅᐅ ᐅᐅ ᐅᐅᐅᐅᐅᐅ
ᐅᐅᐅᐅᐅᐅᐅᐅ

ᐅ ᐅᐅ ᐅᐅᐅᐅᐅᐅᐅ ᐅᐅᐅᐅ ᐅᐅᐅ ᐅᐅ ᐅᐅᐅᐅᐅᐅ
ᐅᐅᐅᐅᐅᐅᐅᐅᐅ

ᐅᐅᐅᐅᐅᐅ ᐅᐅᐅᐅᐅᐅᐅ ᐅᐅᐅᐅᐅᐅᐅᐅ ᐅ ᐅᐅᐅᐅᐅᐅᐅᐅ



Step 2:

Place pattern on the underside or the shiny side of the hide making sure the hide has no flaws or wrinkles.

Trace the pattern using a red pen or pencil.

ᐅ ᐅᐅᐅᐅᐅ ᐅ ᐅᐅᐅᐅᐅᐅ ᐅᐅᐅᐅᐅᐅᐅᐅ

3CJ.Δ' 3:

Lr5 b p .Δ.∇aPaΔL'x .7r b Δs LPaU' ∇
Δs Lr5L'x

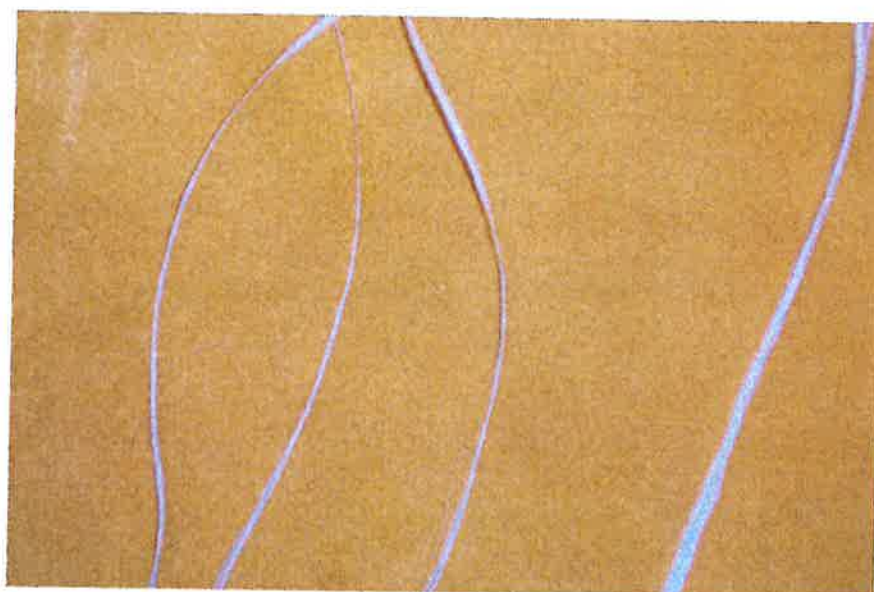


Step 3:

Cut out the traced pattern making sure that the hide is cut right on the pen or pencil mark.

ᐃᐅᐅᐅᐅ 4:

ᐅᐅᐅᐅ ᐅᐅᐅᐅ ᐅᐅᐅᐅ 2 ᐅᐅᐅ ᐅᐅ ᐅᐅᐅᐅᐅᐅᐅᐅᐅ
ᐅᐅᐅᐅᐅᐅ ᐅᐅᐅᐅ ᐅᐅ ᐅᐅᐅᐅᐅᐅᐅᐅᐅ
ᐅᐅᐅᐅ ᐅᐅᐅᐅᐅᐅᐅᐅᐅᐅᐅ



Step 4:

Cut sinew approximately 2' long.
Split sinew into three (3) strands.
Thread sinew through a glover needle.

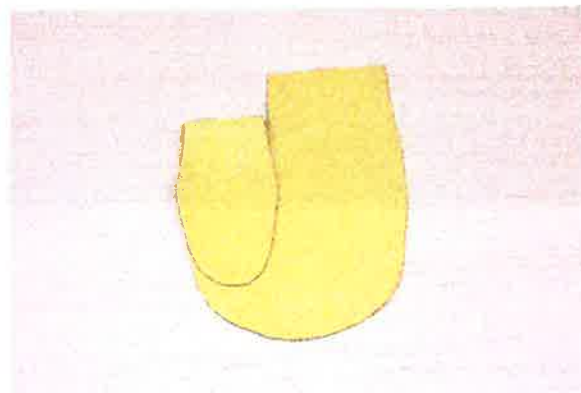
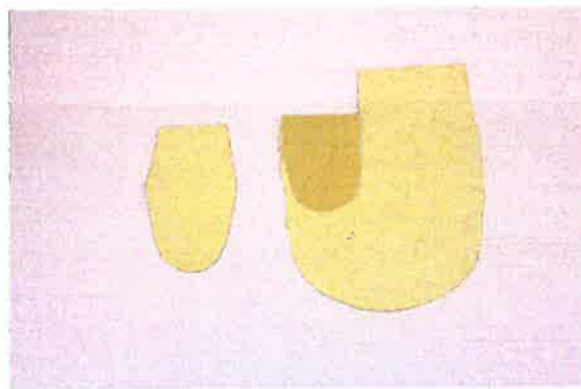
ᐅᐅᐅᐅᐅ ᐅᐅᐅᐅᐅᐅ ᐅᐅᐅᐅᐅᐅᐅᐅᐅᐅᐅ

ՃՇՂ•Դ՝ 5:

ՋՈԼ ՎՇԼ ԴՐԵ՝ Ե ԴՏ ՔԵԺԳ՝x

Ե ԴՏ ՎՇԴ•Վ՝ Վ •ՎՔՈԼԵ՝, ՎՔԼ ԴՐԵ՝x

Ե ԴՏ ՎՇԴ•Վ՝ Վ •ՎՔՈԼԵ՝, Վ•ԵՈԼ ՈՎ՝ Ե Ք
ԼՐԿԼ՝ ԴՐԵ՝ Վ՝Շ Ե Ք ԴՏ ՎՔԼ՝ ԴՐԵ՝x



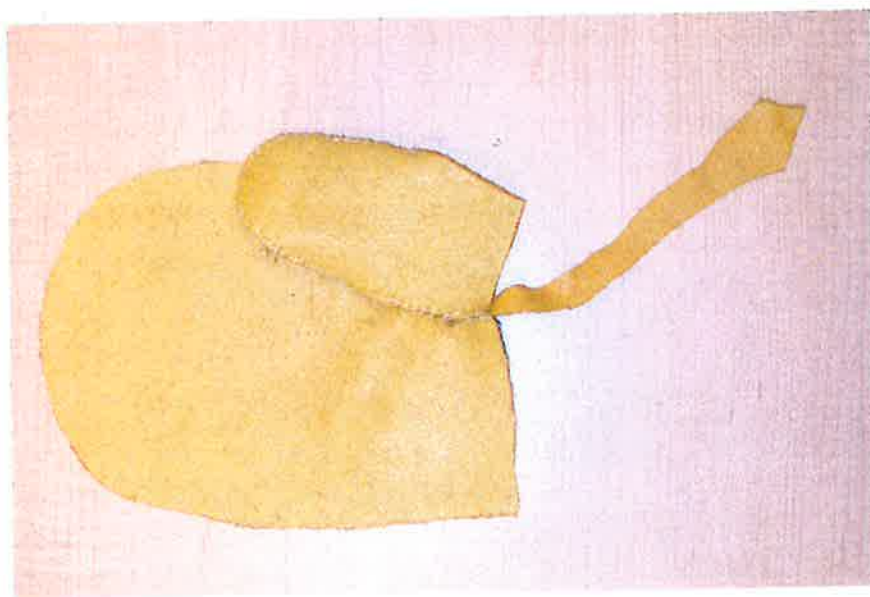
Step 5:

Take the piece of hide with the thumb and with the underside (shiny side) facing up, fold the thumb down.

Place the thumb piece, cut separately, over the other half of the thumb.

ᠵᠴᠠᠳᠤ 8:

᠋᠋ ᠋᠋᠋᠋᠋᠋᠋ ᠋᠋᠋᠋᠋᠋, ᠋᠋᠋᠋᠋᠋ ᠋᠋᠋ ᠋᠋
᠋᠋᠋᠋᠋᠋᠋᠋, ᠋᠋᠋᠋᠋᠋ ᠋᠋᠋᠋ ᠋᠋᠋ ᠋᠋᠋᠋᠋᠋᠋᠋
᠋ ᠋᠋ ᠋᠋᠋᠋ ᠋᠋᠋᠋ ᠋᠋᠋ ᠋᠋᠋᠋᠋᠋ ᠋᠋᠋᠋ ᠋᠋᠋᠋
᠋᠋᠋᠋᠋ ᠋᠋᠋᠋ ᠋ ᠋᠋ ᠋᠋᠋᠋ ᠋᠋᠋᠋᠋ ᠋᠋᠋᠋, ᠋᠋᠋᠋
᠋᠋᠋᠋ ᠋᠋᠋᠋ ᠋᠋ ᠋᠋᠋᠋ ᠋᠋᠋᠋᠋᠋᠋᠋ ᠋᠋᠋
᠋᠋᠋᠋᠋᠋ ᠋᠋᠋᠋᠋᠋᠋᠋ ᠋᠋᠋᠋ ᠋᠋᠋᠋᠋᠋᠋᠋



Step 8:

Sew the three (3) pieces together with an overcast stitch, using sinew, a glover needle, and a thimble.

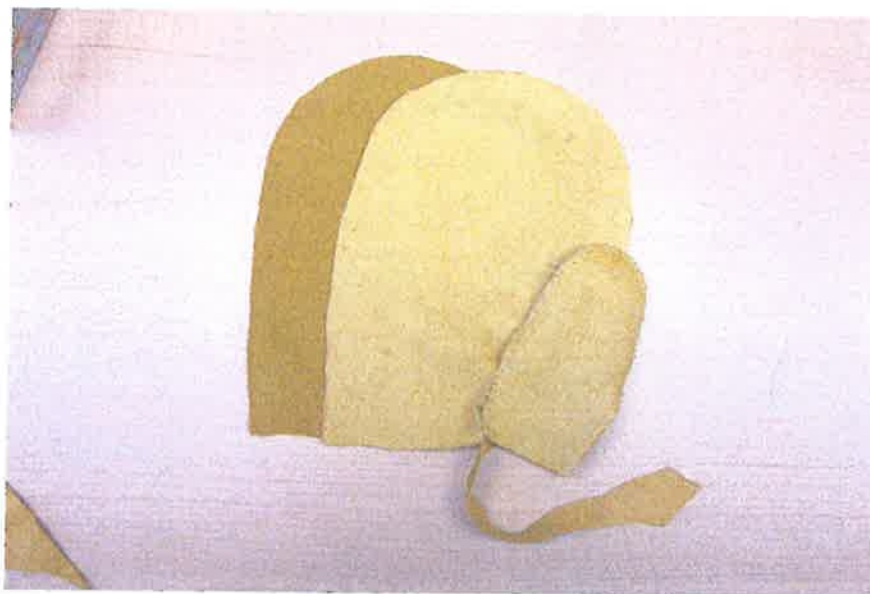
Stitches should be approximately 1/4" apart with closer stitches making a stronger fastening.

Sew around the thumb beginning at the folded section of the thumb until the other side of the folded thumb is reached.

Insert the piping between the rest of the thumb and the palm and continue sewing.

ճՃԼ•Ճ՝ 9:

ԴԴԴ՝ Ծ՞Դ •ՃԼ՝, ԾՃՃԸՈՃ •ՃԲ- ՃՃԼ ԴԴԼ՝ Ե
ՃՏ Ե՞Բ•ԵՍ՝, ԵՃ ՃԾԴՈ՝ ԴԴԼ՝x



Step 9:

Place the other hand with topside (rough side) facing out underneath the sewed thumb shiny side up.

ՃՇԼ•Ճ՝ 10:

Լր՞ •ՎԷ՝ •ՎԿ՞ 1/2 ԴՐԵ՝ ՔՐ Ճ՞ԽԸԵԵ՞Ե՝ ՎԺ
ԼԵ 21 ԴՐԵ՝ ՔՐ Ճ՞ԽՐ Ք•Ե՝ 9 Վ՞Խ•ԵԴ•ՎԳԷ՝
ԴՐՐ՞x

ՃՇԼ•Ճ՝ 11:

ՆԺԵ Վ՞Խ•ԵԴ•Ճ՝ •ՎԷԺ՞ ԴՐՐ՞ Ե՞Րx



Step 10:

Cut a strip of hide 1/2" wide and about 21" long to be used as piping for the hand.

Step 11:

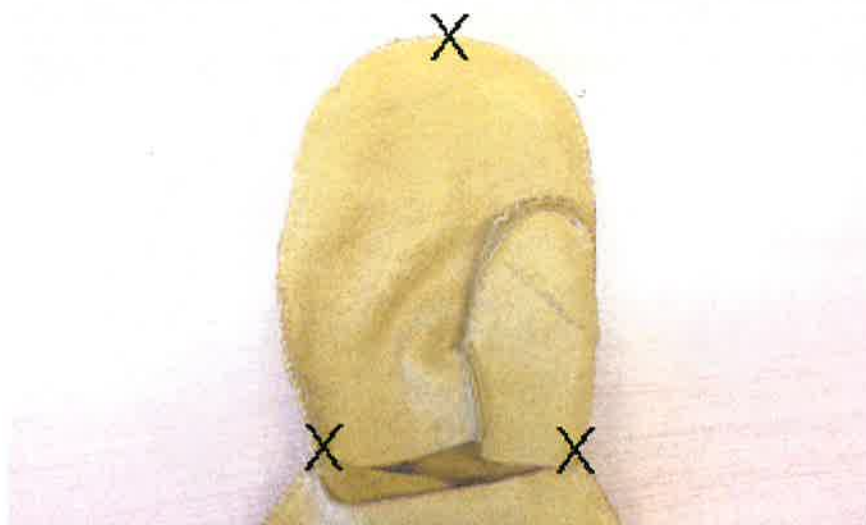
Insert the piping between the hide of the hand.

ᐃᐅᐅᐅᐅ 12:

ᐅᐅᐅᐅᐅ ᐅᐅ ᐅᐅᐅᐅ ᐅᐅᐅ ᐅᐅᐅ ᐅᐅᐅᐅᐅᐅᐅ

ᐃᐅᐅᐅᐅ 13:

ᐅ ᐅᐅ ᐅᐅᐅᐅ ᐅᐅᐅᐅ ᐅ ᐅᐅᐅ ᐅᐅᐅᐅᐅᐅ, ᐅᐅᐅᐅ,
ᐅᐅᐅᐅᐅᐅ ᐅᐅ ᐅᐅ ᐅᐅᐅᐅᐅᐅᐅ ᐅ ᐅᐅᐅᐅᐅᐅ,
ᐅᐅᐅᐅᐅ ᐅᐅᐅ ᐅᐅᐅ ᐅᐅᐅᐅᐅᐅᐅ



Step 12:

Secure the hide pieces at three (3) places.

Step 13:

Sew the three (3) pieces together, with an overcast stitch, starting at the corner of the hand, using sinew, a glover needle, and a thimble.

ᐃᐅᐅᐅᐅ 14:

ᐅᐅᐅᐅᐅᐅᐅ ᐅᐅᐅᐅ ᐅ ᐅ ᐅᐅᐅᐅᐅᐅᐅ ᐅᐅᐅᐅ ᐅᐅ ᐅᐅ
ᐅᐅᐅᐅᐅᐅ

ᐃᐅᐅᐅᐅ 15:

ᐅᐅᐅᐅ ᐅᐅᐅᐅ ᐅ ᐅᐅᐅᐅ ᐅᐅᐅᐅᐅᐅᐅᐅ ᐅᐅᐅᐅᐅᐅ ᐅᐅ
ᐅᐅ ᐅᐅᐅᐅᐅᐅᐅᐅ

ᐃᐅᐅᐅᐅ 16:

ᐅ ᐅᐅ ᐅᐅᐅᐅᐅᐅᐅ ᐅᐅᐅᐅ ᐅᐅᐅᐅᐅ, ᐅᐅᐅᐅ ᐅ ᐅᐅᐅᐅᐅᐅᐅ
ᐅᐅᐅᐅᐅᐅ 5 ᐅᐅᐅᐅ ᐅᐅᐅᐅᐅᐅ 15ᐅ



Step 14:

Turn the sewed hand and the thumb right side out.

Step 15:

Cut off any excess piping making sure not to cut the sinew.

Step 16:

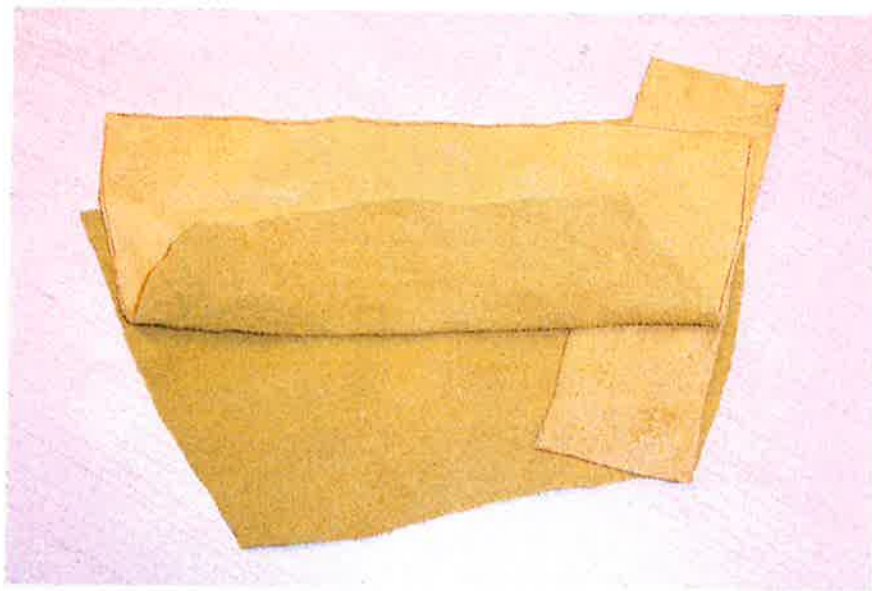
Sew the other hand repeating steps 5 to 15.

ᐃᐅᐅᐅᐅᐅ 17:

ᐅᐅᐅᐅᐅᐅ 2 ᐅᐅᐅᐅᐅ ᐅᐅ ᐅᐅᐅᐅᐅᐅᐅᐅ ᐅᐅ
ᐅᐅ 7 ᐅᐅᐅᐅᐅ ᐅᐅ ᐅᐅᐅᐅ ᐅᐅᐅᐅ 9 ᐅᐅᐅᐅᐅᐅᐅᐅᐅ
ᐅᐅᐅᐅᐅᐅᐅ ᐅᐅᐅ ᐅᐅᐅᐅᐅ

ᐃᐅᐅᐅᐅᐅ 18:

ᐅ ᐅᐅ ᐅᐅᐅᐅᐅᐅ ᐅᐅ ᐅᐅᐅᐅ, ᐅᐅᐅ ᐅᐅᐅᐅᐅᐅᐅᐅ
ᐅᐅᐅᐅᐅᐅ ᐅᐅᐅ ᐅᐅᐅ ᐅᐅᐅᐅᐅᐅᐅᐅ



Step 17:

Cut two (2) pieces of hide about 2" wide and about 7" long to be used as piping for the cuff.

Step 18:

Insert the piping between the two (2) pieces of the cuff with the underside facing out.

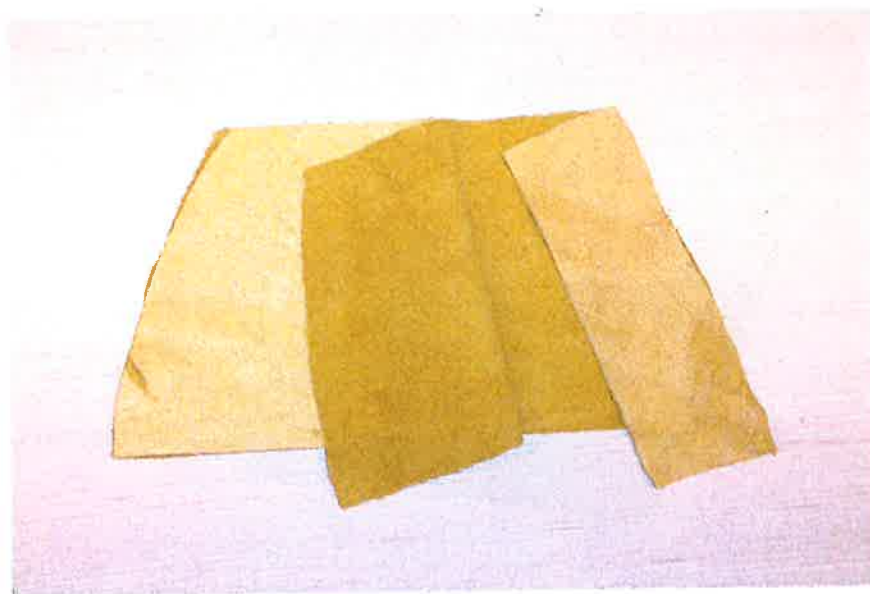
CCJ-Δ³ 19:

[illegible]

CCJ Δ² 20:

▽ ▷·бσ ∇↳·б' ∟С ·q^PU ΔUq_x ααбгГ ∇↳·б'
 ρρ ΔJΠP б ΔJ ◁CΓ·Δ' ·◁↳_x

21:

[illegible]

Step 19:

Step 15:
Sew the three (3) pieces together, with a running stitch, using sinew, a glover needle, and a thimble,

Step 20:

Repeat on the other side of the cuff making sure the underside of the strips are facing the same way.

Step 21:

Sew the other cuff repeating steps 17 to 20.

25: Δ·J·C

၆ Δ၂ ဝှပ.ဝှပ. ငှ ပှပှ ပှပှ, ပှပှ ဝှပ.ဝှပ.
 ငှပှ ပှပှ .ငှပှပှ.ငှ.

26:

▽ ·Δ b^υρ·bC' dC\ Δ^ηη^η, ρ^η↯Δ b ΔCρ^ηΔUP
 ∩C┘·Δ^υ 22 ∧σ^υ ∩C┘·Δ^υ 25_x



Step 25:

Sew the three (3) pieces together going around the mitten starting at the seams.

Step 26:

Sew the cuff on the other mitten repeating steps 22 to 25.

ԾԼ•Ճ՝ 27:

•Գ՞Ե>ԴԸՏ՝ ԵԲԶ° Վ՞ՈԿ՝x



Step 27:

Turn mittens right side out.

▽ յԴԵՍ՝ ▽ ԵԴ•ՎԼԺ Վ՞ՈԴԵԺ•Վ՝

CCJ-Δ³ 28:

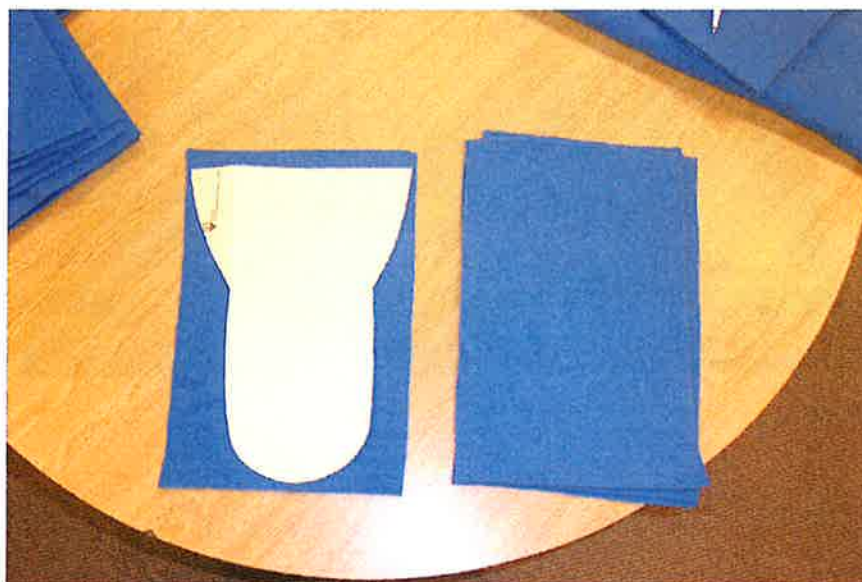
ΛC·∇σb³ ▷ⁿᵣ, ·◁·∇σς ρ▷ ddⁿ ·◁▷ⁿᵣᵣσς
·◁⁴ⁿ 11 Γᵣᵤ³ ᵣᵣ ΔⁿΛCᵤᵣⁿᵇᵣ ∇ᵈ Lᵇ 15 Γᵣᵤ³
ᵣᵣ ΔⁿΛᵣ ᵣ·ᵤᵣₓ

29:

$\cdot \Delta \cdot \nabla \sigma \cap C \quad \Gamma \Gamma \Gamma^{\Delta} \quad \nabla d \quad Lb \quad \Gamma^{\wedge} \Delta \supset \quad \cdot \Delta \cdot \nabla \neg \mathfrak{S} b_a \quad \cdot \Delta P -$
 $\nabla \quad P^{\wedge} < b \setminus \quad L \rho_a \nabla P \sigma \cdot \Delta \supset \quad \neg^{\circ} C \quad \wedge d \quad \nabla \quad \Gamma C_a \supset$
 $L \rho_a \nabla P \sigma \cdot \Delta \supset_x \quad C < \rho_a \Delta \quad \Delta \sigma L \quad \cdot \Delta \cdot \nabla \sigma \mathfrak{S} b \supset \quad \neg^{\circ} C \quad P^{\cup} \cdot b$
 $L \Gamma \mathfrak{S}_x$

30:

$C \langle P_{\alpha} \rangle \langle \sigma_L \rangle \cdot \langle \nabla \sigma \rangle S b^{\nu} d d^{\nu} \cdot \langle \nabla \sigma \rangle - \sigma \rangle$
 $\Delta S C_x$



Step 28:

Cut four (4) pieces of duffel, for the lining, about 11" wide and 15" in length.

Step 29:

Place hand and cuff pattern on a piece of thick paper or cardboard, trace, and cut out this pattern.

Step 30:

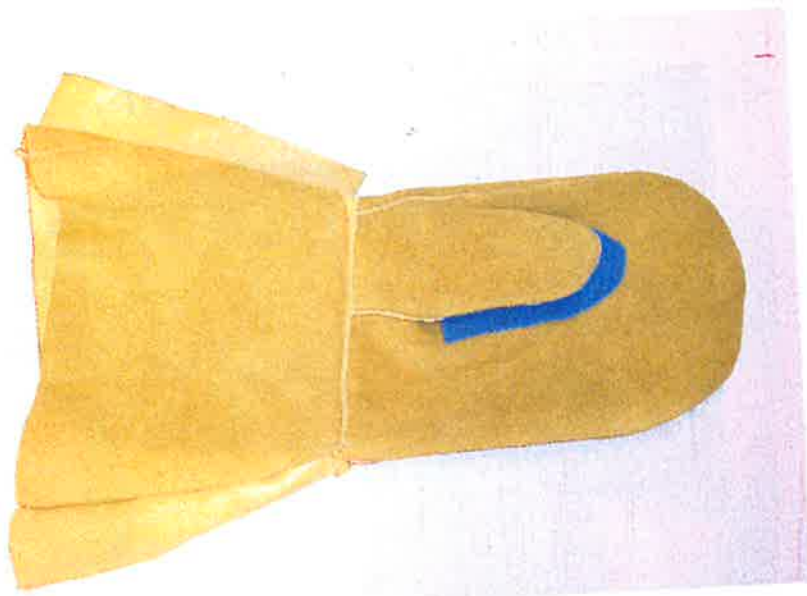
Trace the pattern on the duffle and make four (4) patterns.

ᐃᐅᐅᐅᐅᐅ 33:

ᐅᐅᐅᐅᐅᐅ ᐅᐅᐅᐅᐅᐅᐅ ᐅᐅ ᐅᐅᐅᐅᐅᐅᐅ, ᐅᐅᐅᐅᐅ ᐅᐅᐅ
 ᐅᐅᐅᐅᐅᐅᐅ ᐅᐅᐅᐅ ᐅᐅᐅᐅᐅᐅᐅ ᐅᐅᐅ ᐅᐅᐅᐅᐅᐅᐅ ᐅᐅ
 ᐅᐅᐅᐅ ᐅᐅᐅᐅᐅᐅᐅ

ᐃᐅᐅᐅᐅᐅ 34:

ᐅᐅᐅᐅᐅᐅ ᐅᐅ ᐅᐅ ᐅᐅ ᐅᐅᐅᐅᐅᐅᐅᐅᐅ ᐅᐅᐅᐅᐅᐅᐅ ᐅᐅ
 ᐅᐅᐅᐅᐅᐅᐅ, ᐅᐅᐅᐅᐅᐅᐅ ᐅᐅᐅ ᐅᐅᐅᐅᐅᐅᐅᐅ ᐅᐅᐅᐅᐅ ᐅᐅᐅᐅᐅᐅᐅ



Step 33:

Trace thumb pattern on the duffel and cut and make four (4) patterns.

Step 34:

Sew two (2) thumb pieces together, with a running stitch, using a standard needle and a strong thread.

ՃՇՂ•ԱՅ 35:

Հ>ԾԵՅ Վժ ԼԵ Վ ԼՆԵ•ՎԱԳՐ՝ ՇԱՆՆԵՐՅ Վ
ՎՀՐՎ՝, ՎԺՆՇՎ ԴՐԵՅ ՎՅՇ ԴՐԻ՝x



Step 35:

Sew the thumb piece around the hole on the duffle, with a baseball stitch, using a standard needle and a strong thread.

ᐃᐅᐅᐅᐅᐅ 36:

ᐱᐅᐅ ᐅᐅᐅ ᐅᐅᐅᐅᐅ ᐅᐅᐅᐅᐅ ᐱᐅ ᐅᐅᐅᐅᐅᐅ ᐅᐅᐅᐅᐅᐅ
ᐅᐅᐅᐅᐅᐅᐅ ᐅᐅᐅᐅᐅᐅ ᐱᐅ ᐅᐅᐅᐅᐅᐅ ᐅᐅᐅᐅᐅᐅ ᐅᐅᐅᐅᐅ
ᐅᐅ ᐅᐅᐅᐅᐅᐅ

ᐃᐅᐅᐅᐅᐅ 37:

ᐅ ᐅᐅ ᐅᐅᐅᐅᐅᐅᐅ ᐅᐅᐅᐅ ᐅᐅᐅᐅᐅ, ᐅᐅᐅᐅᐅ ᐅ ᐅᐅᐅᐅᐅᐅᐅ
ᐃᐅᐅᐅᐅᐅ 31 ᐱᐅᐅ ᐃᐅᐅᐅᐅᐅ 36ᐅ



Step 36:

Insert duffle mitten into the moosehide mitten.
Adjust the duffle to fit the inside of the moosehide mitten.

Step 37:

Sew the duffle for the other mitten repeating steps 31 to 36.

ᐃᐅᐅᐅᐅᐅ 38:

ᐅᐅᐅ ᐅᐅᐅᐅᐅᐅ ᐅᐅᐅᐅ ᐅᐅᐅᐅ 2 ᐅᐅᐅᐅ ᐅᐅ
ᐅᐅᐅᐅᐅᐅᐅᐅ ᐅᐅ ᐅᐅ 21 ᐅᐅᐅᐅ ᐅᐅ ᐅᐅᐅᐅ ᐅᐅᐅᐅ
ᐅ ᐅᐅᐅᐅᐅᐅᐅᐅᐅ ᐅᐅᐅᐅᐅᐅᐅ

ᐃᐅᐅᐅᐅᐅ 39:

ᐅᐅ ᐅᐅᐅ, ᐅᐅᐅᐅ ᐅᐅᐅᐅ ᐅ ᐅᐅ ᐅᐅᐅᐅ ᐅᐅᐅᐅᐅᐅ ᐅ
ᐅᐅ ᐅᐅᐅᐅᐅᐅ ᐅᐅᐅ ᐅᐅᐅ ᐅᐅᐅᐅᐅᐅᐅ



Step 38:

Cut a strip of fur about 2" wide and 21" long for trimming on the edge of the cuff.

Step 39:

Tag the fur trimming on to the inside top of the cuff with the underside showing.

ᐃᐅᐅᐅᐅ 40:

ᐅᐅᐅᐅᐅᐅ ᐅᐅ ᐅᐅ ᐅᐅᐅᐅ ᐅᐅᐅ ᐅᐅ ᐅᐅ
ᐅᐅᐅᐅᐅᐅᐅᐅ ᐅᐅᐅᐅᐅᐅ ᐅ ᐅᐅᐅᐅᐅᐅ, ᐅᐅᐅᐅ ᐅᐅᐅᐅᐅᐅ,
ᐅ ᐅᐅᐅᐅᐅᐅᐅ ᐅᐅᐅᐅᐅᐅ ᐅᐅᐅᐅ, ᐅᐅᐅᐅᐅ ᐅᐅ ᐅᐅ
ᐅᐅᐅᐅᐅᐅᐅ.



Step 40:

Sew together the three (3) pieces (fur, hide, and duffle), with a running stitch, using a glover needle and a sinew or strong thread.

CCJ-Δ³ 41:

$\Delta P^2 \propto \Delta \epsilon \epsilon \propto \Delta \epsilon^2$, $\Delta d^2 \propto \Delta \epsilon^2$ $\Delta \epsilon \propto \Delta \epsilon^2$ $\Delta \epsilon \propto \Delta \epsilon^2$
 $\Delta \epsilon \propto \Delta \epsilon^2$ $\Delta \epsilon \propto \Delta \epsilon^2$

CCJ-Δ³ 42:

$\nabla \cdot \Delta$ $b^u p \cdot b C'$ $d C \setminus \triangleleft^n \cap^n$, $\mathfrak{d} \mathfrak{r} \mathfrak{o} \triangleleft$ b $\Delta C \mathfrak{r} \mathfrak{e} U \mathfrak{p}$
 $\mathfrak{D} C \mathfrak{J} \cdot \Delta^{\mathfrak{D}}$ 38 $\wedge \sigma^u$ $\mathfrak{D} C \mathfrak{J} \cdot \Delta^{\mathfrak{D}}$ 41_x



Step 41:

Fold down the fur trim, and sew it on to the hide making sure the duffle is not sewed with it.

Step 42:

Sew trim on the other mitten repeating steps 38 to 41.

ᐃᐅᐅᐅᐅ 43:

ᐅᐅᐅᐅ ᐅᐅᐅᐅᐅᐅᐅ ᐅ ᐅᐅᐅ ᐅᐅᐅᐅᐅᐅᐅ

ᐃᐅᐅᐅᐅ 44:

ᐅᐅᐅᐅ ᐅᐅ ᐅᐅᐅᐅᐅᐅ ᐅᐅᐅᐅᐅᐅ ᐅᐅᐅ ᐅᐅ ᐅᐅᐅᐅᐅ



Step 43:

Cut the piping on cuffs into fringes or trim as desired.

Step 44: Enjoy wearing your completed mittens on a cold winter day.



ᐃᑕᑭᐭ ᐅᑕᑭᑦᑕᐅ ᑭᑭᐭᐅᐅ ᑭᐅ ᑭᐅᐅᑭ ᐅᐅᐅᐅ

Other items made by Elder
Joan Kioke Wesley.

ᐅᐅ ᑭᑭᑭᑭ ᐅ ᑭᑭᐅᐅᐅ ᐅᐅᑭᑭᑭᐅᐅ

How to Make Mittens is a complete guide detailing the techniques and processes involved in making mittens.

